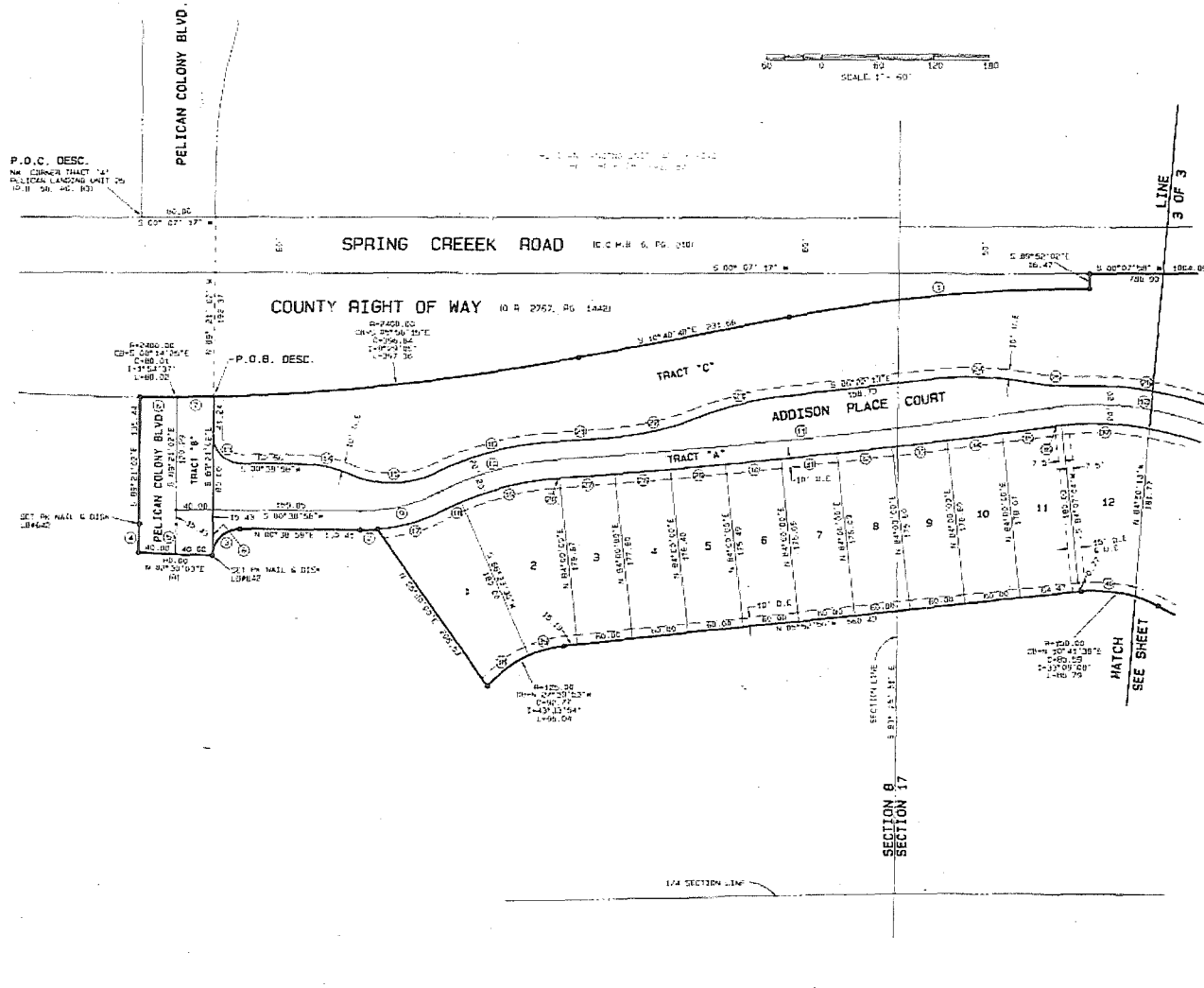
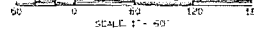
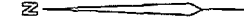


PREPARED BY:
JOHNSON ENGINEERING, INC.
2318 JOHNSON STREET
FORT MYER, FLORIDA 33901

PELICAN LANDING UNIT TWENTY EIGHT

A SUBDIVISION IN
SECTIONS 8 & 17, TOWNSHIP 47 SOUTH, RANGE 25 EAST
LEE COUNTY, FLORIDA



CURVE DATA

STATION	DELTA	RADIUS	LENGTH	TANGENT	CHORD BEARING	CHORD DIST.
01	10°48'05"	1725.00	325.30	163.08	S 65°10'46"E	324.72
02	7°16'43"	200.00	38.42	8.32	N 67°59'29"W	16.42
03	88°08'55"	36.00	46.25	28.05	N 43°25'29"W	41.74
04	1°51'05"	960.00	31.05	15.51	S 89°02'10"E	31.52
05	1°51'05"	1000.00	32.31	16.16	N 89°25'29"W	32.51
06	0°57'18"	2450.00	40.00	20.00	S 80°54'25"W	40.00
07	0°57'18"	2450.00	40.01	20.01	S 80°54'10"E	40.01
08	1°51'05"	1540.00	31.61	16.30	N 89°25'29"W	32.60
09	27°41'22"	180.00	66.55	44.29	S 12°11'23"E	66.14
10	23°12'02"	329.00	131.50	86.71	S 11°26'23"E	130.70
11	4°04'56"	7526.00	536.50	266.26	S 69°12'50"E	536.26
12	36°25'49"	350.00	282.54	125.48	S 10°17'36"W	278.81
13	90°00'00"	36.00	47.12	28.00	S 45°38'52"W	45.43
14	0°15'58'53"	150.00	57.15	29.13	S 12°38'25"W	57.19
15	48°08'05"	115.00	96.81	51.36	S 01°26'12"E	93.88
16	21°39'53"	342.00	139.45	66.01	S 14°42'19"E	128.60
17	22°24'30"	200.00	78.03	39.62	S 15°56'09"E	77.72
18	3°17'37"	305.00	17.53	8.77	S 29°03'36"E	17.52
19	13°54'29"	329.00	129.91	63.62	S 12°43'20"E	129.44
20	0°51'48"	7550.00	1.95	1.98	S 02°51'16"E	3.96
21	0°27'48"	7510.00	60.73	30.37	S 04°04'16"E	60.73
22	16°51'29"	360.00	196.82	100.82	S 12°33'16"E	196.58
23	14°27'19"	370.00	93.35	46.02	S 13°30'52"E	93.10
24	15°50'47"	370.00	162.33	81.49	S 01°33'11"W	162.01
25	18°47'53"	360.00	65.94	33.07	S 04°04'42"W	65.85
26	0°49'29"	370.00	182.62	96.54	S 12°25'41"W	182.45
27	0°27'20"	7550.00	60.05	29.01	S 04°05'50"E	60.03
28	0°27'20"	7550.00	60.03	29.01	S 04°33'10"E	60.03
29	0°27'19"	7550.00	59.99	29.00	S 04°05'30"E	59.99
30	0°27'19"	7550.00	60.03	29.01	S 05°27'49"E	60.03
31	0°27'19"	7550.00	59.05	29.00	S 05°58'08"E	59.05
32	0°27'16"	7550.00	59.99	29.00	S 06°32'23"E	59.99
33	0°27'16"	7550.00	59.99	29.00	S 06°48'47"E	59.99
34	0°27'22"	7550.00	60.03	30.01	S 07°17'06"E	60.03
35	0°24'32"	7550.00	53.68	26.94	S 07°43'52"E	53.80
36	1°54'21"	330.00	40.89	5.49	S 06°58'07"E	10.89
37	18°33'27"	330.00	95.36	48.02	S 02°15'47"W	95.03
38	0°10'26"	125.00	55.64	26.29	S 06°41'47"E	55.18
39	18°03'49"	125.00	35.41	15.87	S 14°54'50"E	35.25
40	25°08'47"	150.00	60.07	30.44	S 05°35'28"W	59.67

PREPARED BY:
JOHNSON ENGINEERING, INC.
7159 JOHNSON STREET
FORT WORTH, FLORIDA 32901

PELICAN LANDING UNIT TWENTY EIGHT

A SUBDIVISION IN
SECTIONS 8 & 17, TOWNSHIP 47 SOUTH, RANGE 25 EAST
LEE COUNTY, FLORIDA

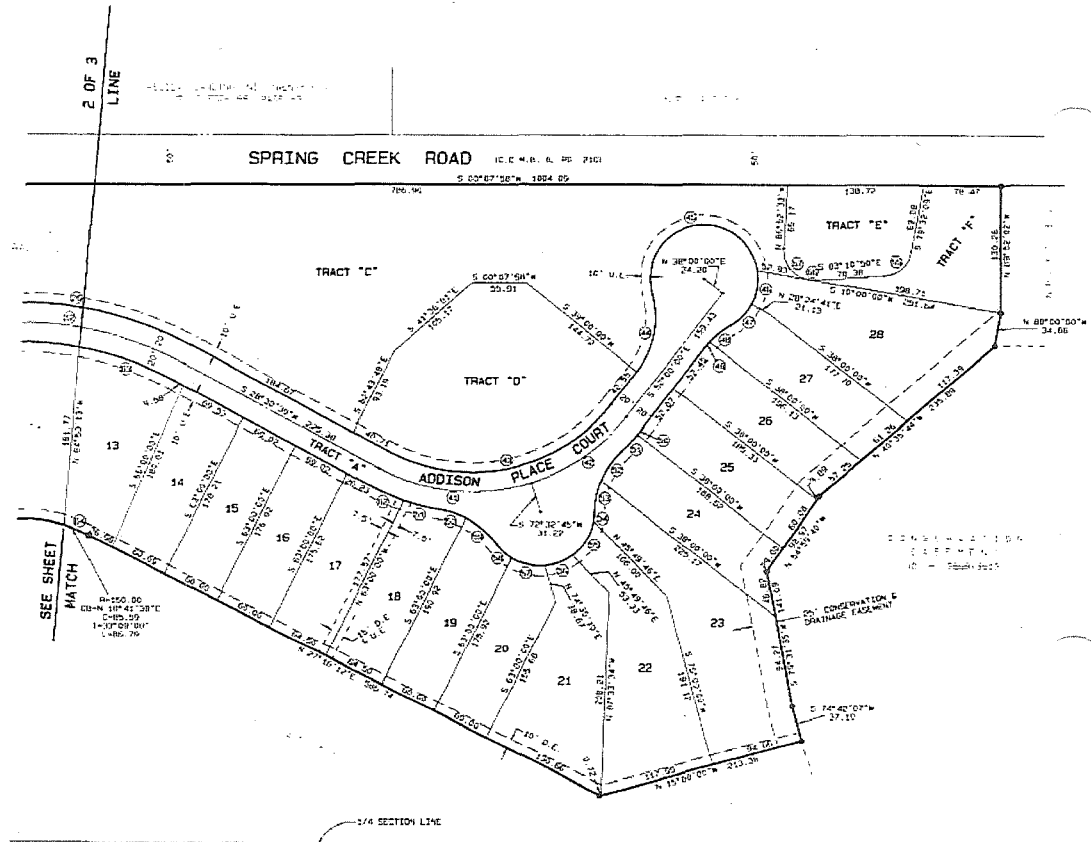
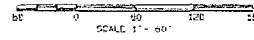


LOT/TRACT AREAS

LOT #	SQUARE FEET
1	13,781
2	14,863
3	10,122
4	10,528
5	10,528
6	10,528
7	10,528
8	10,528
9	10,528
10	10,528
11	10,528
12	10,528
13	10,528
14	10,528
15	10,528
16	10,528
17	10,528
18	10,528
19	10,528
20	10,528
21	10,528
22	10,528
23	10,528
24	10,528
25	10,528
26	10,528
27	10,528
28	10,528
29	10,528
30	10,528
31	10,528
32	10,528
33	10,528
34	10,528
35	10,528
36	10,528
37	10,528
38	10,528
39	10,528
40	10,528
41	10,528
42	10,528
43	10,528
44	10,528
45	10,528
46	10,528
47	10,528
48	10,528
49	10,528
50	10,528
51	10,528
52	10,528
53	10,528
54	10,528
55	10,528
56	10,528
57	10,528
58	10,528
59	10,528
60	10,528
61	10,528
62	10,528
63	10,528
64	10,528
65	10,528
66	10,528
67	10,528
68	10,528
69	10,528
70	10,528
71	10,528
72	10,528
73	10,528
74	10,528
75	10,528
76	10,528
77	10,528
78	10,528
79	10,528
80	10,528
81	10,528
82	10,528
83	10,528
84	10,528
85	10,528
86	10,528
87	10,528
88	10,528
89	10,528
90	10,528
91	10,528
92	10,528
93	10,528
94	10,528
95	10,528
96	10,528
97	10,528
98	10,528
99	10,528
100	10,528

TRACT

A	191,477
B	11,450
C	194,749
D	36,588
E	17,127
F	17,127
G	17,127
H	17,127
I	17,127
J	17,127
K	17,127
L	17,127
M	17,127
N	17,127
O	17,127
P	17,127
Q	17,127
R	17,127
S	17,127
T	17,127
U	17,127
V	17,127
W	17,127
X	17,127
Y	17,127
Z	17,127



CURVE DATA

NO.	DELTA	RADIUS	LENGTH	TANGENT	CHORD BEARING	CHORD DIST.
01	32°17'26"	203.09	365.44	64.62	S 62°35'58"W	286.77
02	30°32'45"	203.09	320.59	62.19	S 58°43'37"E	248.77
03	80°30'30"	180.00	292.00	180.00	S 11°24'46"E	232.62
04	53°43'11"	90.00	84.38	45.56	S 78°51'36"E	81.23
05	166°24'00"	85.00	179.25		S 10°21'07"E	109.81
06	37°25'43"	59.00	30.60	16.63	N 62°17'11"W	35.26
07	31°50'37"	55.00	30.17	15.69	N 45°48'00"W	30.18
08	17°06'40"	93.00	27.40	12.81	N 38°25'02"W	27.30
09	4°48'38"	63.00	7.58	3.78	N 46°35'41"W	7.55
10	2°04'00"	200.00	7.04	3.97	N 50°58'00"W	7.04
11	6°11'51"	203.09	24.80	11.74	N 48°50'04"W	23.76
12	23°14'09"	92.00	36.63	16.57	N 52°23'41"W	26.36
13	21°25'58"	92.00	33.52	17.17	N 77°51'13"W	33.72
14	18°01'10"	55.00	27.70	3.86	N 84°38'04"W	7.85
15	48°06'14"	15.00	42.34	32.28	N 10°34'49"E	41.30
16	31°44'27"	15.00	30.47	15.64	N 20°39'08"E	32.08
17	36°46'58"	55.00	25.47	14.38	N 17°43'14"E	24.86
18	21°34'54"	50.00	20.72	10.48	N 42°57'12"E	20.66
19	26°33'03"	50.00	41.71	21.23	N 46°29'10"E	41.33
20	16°21'59"	90.00	29.85	14.55	N 16°00'39"E	28.72
21	5°40'20"	220.00	37.17	16.63	N 12°40'05"E	37.12
22	10°00'00"	220.00	38.40	19.25	N 27°30'30"E	38.40
23	17°50'30"	220.00	103.48	52.17	N 15°31'30"E	103.06
24	10°12'21"	150.00	26.72	13.39	S 22°10'01"W	26.06
25	7°21'49"	30.00	30.58	20.59	S 41°02'29"E	31.08
26	13°10'50"	20.00	6.30	3.47	N 03°24'26"E	6.09
27	65°07'27"	30.00	43.52	26.80	N 51°32'44"E	28.81