

PELICAN LANDING UNIT SEVENTEEN ADDITION

A REPLAT OF TRACT "D" OF PELICAN LANDING UNIT SEVENTEEN (PLAT BOOK 53, PAGES 50-53)
SECTION 21 TOWNSHIP 47 SOUTH, RANGE 25 EAST,
LEE COUNTY, FLORIDA

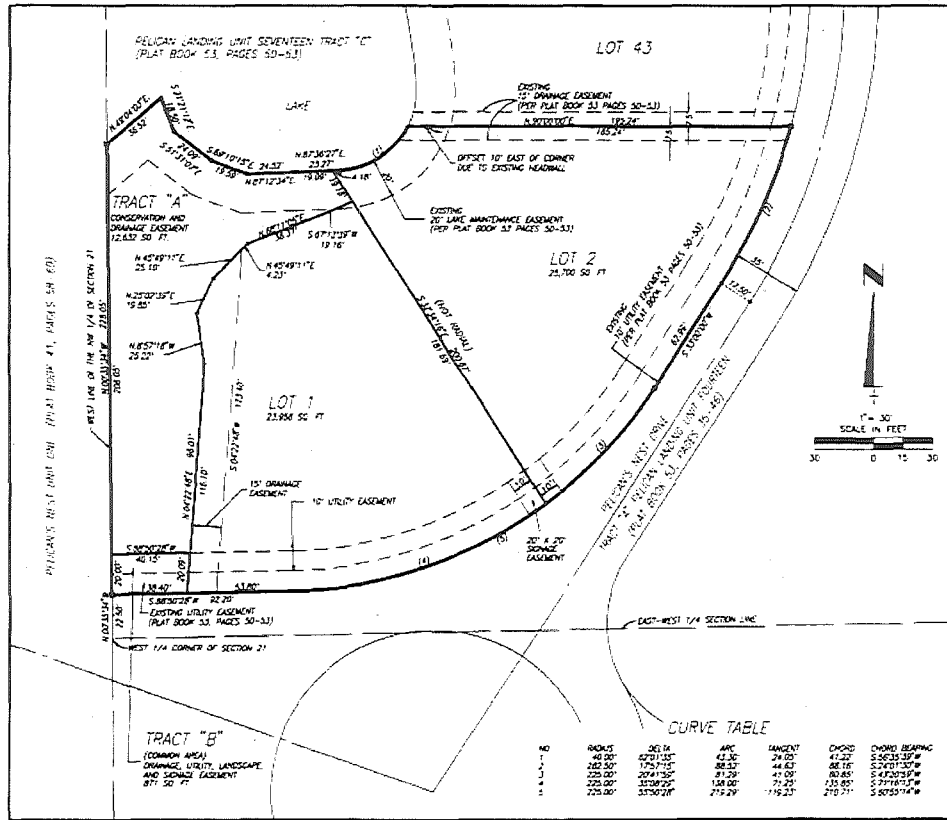
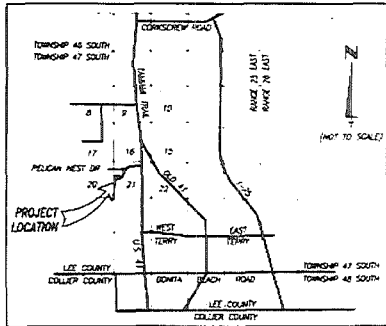
NOTICE
LANDS DESCRIBED IN THIS PLAT ARE SUBDIVIDED BY THE DEVELOPER WITHOUT THE ROADS, DRAINAGE AND SEWER FACILITIES BEING ACCEPTED FOR MAINTENANCE BY LEE COUNTY. ANY PURCHASER OF A LOT IN THIS SUBDIVISION IS ADVISED THAT HE MAY BE SUBJECT TO ASSESSMENT OR CALLED UPON TO BEAR A PORTION OR ALL OF THE EXPENSE OF CONSTRUCTION, MAINTENANCE OR IMPROVEMENT OF ROADS, DRAINAGE AND SEWER FACILITIES.

LEGAL DESCRIPTION

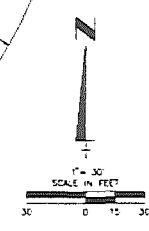
ALL OF TRACT "D" OF PELICAN LANDING UNIT SEVENTEEN ACCORDING TO THE PLAT THEREOF AS RECORDED IN PLAT BOOK 53, PAGES 50 THROUGH 53, PUBLIC RECORDS OF LEE COUNTY, FLORIDA CONTAINING 1.45 ACRES, MORE OR LESS.

NOTES

- (1) DIMENSIONS INDICATED BY CONCRETE MONUMENT STAMPED PERMANENT REFERENCE MONUMENT.
- (2) DIMENSIONS INDICATED BY CONCRETE MONUMENT STAMPED PERMANENT REFERENCE MONUMENT.
- (3) DIMENSIONS INDICATED BY CURVE DATA CONTAINED IN THIS CURVE TABLE.



DEDICATION
I HEREBY DECLARE AND APPROVE THAT I, JERRY H. SCHMIDT, SENIOR VICE-PRESIDENT AND SECRETARY OF W.C.I. COMMUNITIES LIMITED PARTNERSHIP (FORMERLY KNOWN AS PELICAN LANDING COMMUNITIES, INC.), A LIMITED PARTNERSHIP UNDER THE LAWS OF THE STATE OF FLORIDA, OWNER OF THE LANDS DESCRIBED HEREIN HAS CAUSED THIS PLAT OF PELICAN LANDING UNIT SEVENTEEN ADDITION, A REPLAT OF TRACT "D" OF THE PLAT OF PELICAN LANDING UNIT SEVENTEEN, PLAT BOOK 53, PAGES 50-53, LEE COUNTY, FLORIDA TO BE MADE AND DOES HEREBY MAKE THE FOLLOWING DEDICATIONS:
TO THE BAY CREST COMMUNITY DEVELOPMENT DISTRICT, ITS SUCCESSORS AND ASSIGNS, ALL OF TRACT "A" (CONSERVATION AND DRAINAGE EASEMENT) TOGETHER WITH DRAINAGE IMPROVEMENTS NOW OR HEREAFTER CONTAINED THEREIN, FOR PURPOSES OF OPEN SPACE, VEGETATION PROTECTION, MAINTENANCE AND DRAINAGE.
TO THE BAY CREST COMMUNITY DEVELOPMENT DISTRICT, ITS SUCCESSORS AND ASSIGNS, ALL OF TRACT "B" (COMMON AREA) TOGETHER WITH LANDSCAPING AND DRAINAGE IMPROVEMENTS NOW OR HEREAFTER CONTAINED THEREIN, FOR PURPOSES OF WHICH ARE NOT LIMITED TO INSTALLATION, MAINTENANCE, REPAIR AND REPLACEMENT OF ITS LANDSCAPING, IRRIGATION AND DRAINAGE.
TO THE BAY CREST COMMUNITY DEVELOPMENT DISTRICT, ITS SUCCESSORS AND ASSIGNS, ALL EASEMENTS HEREIN LABELED "DRAINAGE EASEMENT" (INCLUDING ALL OF TRACT "B" AND THE WESTERN PORTION OF LOT "1") AS SHOWN ON THIS PLAT AS A DRAINAGE EASEMENT, FOR PURPOSES OF INSTALLATION, REPAIR, MAINTENANCE AND REPLACEMENT OF ITS DRAINAGE FACILITIES WITHIN SAID DRAINAGE EASEMENTS.
TO THE BAY CREST COMMUNITY DEVELOPMENT DISTRICT, ITS SUCCESSORS AND ASSIGNS, ALL EASEMENTS HEREIN LABELED "LAKE MAINTENANCE EASEMENTS" (INCLUDING PART OF TRACT "A" AND PART OF LOTS 1 AND 2) AS SHOWN ON THIS PLAT AS A LAKE MAINTENANCE EASEMENT, FOR THE PURPOSES OF WATER MANAGEMENT, DRAINAGE AND/OR LAKE MAINTENANCE.
TO THE BAY CREST COMMUNITY DEVELOPMENT DISTRICT, ITS SUCCESSORS AND ASSIGNS, AND TO THE RESPECTIVE GOVERNMENT AGENCIES AND PUBLIC UTILITIES HAVING THE AUTHORITY TO PROVIDE FOR SUCH SERVICES, SHARED USE OF ALL EASEMENTS HEREIN LABELED "UTILITY EASEMENT" (INCLUDING ALL OF TRACT "B" AND PART OF LOTS 1 AND 2) AS SHOWN ON THIS PLAT AS A UTILITY EASEMENT, FOR PURPOSES OF INSTALLATION, REPAIR, MAINTENANCE AND IMPROVEMENT OF THESE RESPECTIVE FACILITIES, INCLUDING WATER, SEWER, IRRIGATION, ELECTRIC, CABLE TELEVISION, STREET LIGHTS AND TELEPHONE WITHIN SAID UTILITY EASEMENTS.



W.C.I. COMMUNITIES LIMITED PARTNERSHIP (FORMERLY KNOWN AS PELICAN LANDING COMMUNITIES, INC.)
IN WITNESS WHEREOF, I, JERRY H. SCHMIDT, SENIOR VICE-PRESIDENT AND SECRETARY OF SAID PARTNERSHIP, HAVE CAUSED THIS PLAT TO BE MADE AND SIGNED IN ITS NAME BY ITS SENIOR VICE-PRESIDENT AND SECRETARY, JERRY H. SCHMIDT, SENIOR VICE-PRESIDENT AND SECRETARY OF SAID PARTNERSHIP.
JERRY H. SCHMIDT, SENIOR VICE-PRESIDENT
JERRY H. SCHMIDT, SENIOR VICE-PRESIDENT
WEN HAINES, SECRETARY
WEN HAINES, SECRETARY
DATE: 12-2-96
1995 A.D.
WITNESS AS TO BOTH

ACKNOWLEDGMENT
STATE OF FLORIDA
COUNTY OF LEE
I, THE FOREGOING DEDICATION WAS ACKNOWLEDGED BEFORE ME THIS 22nd DAY OF DECEMBER, 1995 A.D. BY JERRY H. SCHMIDT, SENIOR VICE-PRESIDENT AND SECRETARY OF W.C.I. COMMUNITIES LIMITED PARTNERSHIP (FORMERLY KNOWN AS PELICAN LANDING COMMUNITIES, INC.), A LIMITED PARTNERSHIP, ON BEHALF OF SAID LIMITED PARTNERSHIP. THEY ARE PERSONALLY KNOWN TO ME TO BE THE PERSONS DESCRIBED BY AND WHO EXECUTED THE FOREGOING DEDICATION AND ACKNOWLEDGMENT. THE DEDICATION THEREOF TO BE THEIR FREE ACT AND DEED AS SUCH OFFICERS FOR THE USES AND PURPOSES THEREIN MENTIONED AND THAT SAID DEDICATION IS THE ACT AND DEED OF SAID LIMITED PARTNERSHIP.
WITNESS MY HAND AND SEAL OF OFFICE THIS 22nd DAY OF DECEMBER, 1995.
DEAN C. MILLER
NOTARY PUBLIC - STATE OF FLORIDA
MY COMMISSION EXPIRES 12-2-96
W/ COMMISSION 1995/96

NO.	POINTS	PC	APC	ENDPOINT	CHORD	CHORD BEARING
1	40.00	672.1157	42.30	24.00	47.27	S56°33'37"W
2	100.00	1795.7719	68.55	44.62	88.16	S72°02'15"W
3	220.00	2074.7152	81.29	41.01	80.85	S42°33'27"W
4	220.00	3236.7779	134.90	71.29	130.88	S77°18'35"W
5	220.00	3330.2718	212.29	112.29	210.01	S62°55'14"W

NOTICE
THERE MAY BE ADDITIONAL RESTRICTIONS THAT ARE NOT REPRODUCED ON THIS PLAT THAT MAY BE FOUND IN THE PUBLIC RECORDS OF THIS COUNTY.

APPROVALS
THIS PLAT WAS ACCEPTED THIS 2nd DAY OF DECEMBER, 1995 A.D. IN AN OPEN MEETING OF THE BOARD OF COUNTY COMMISSIONERS OF LEE COUNTY, FLORIDA.
Chairman of the Board of County Commissioners: CHARLIE GREEN
County Attorney: ALAN GIBSON
Director of Planning and Development Services Division: WALTER MILLER
Director of Community Development: MARY GRUBB
Director, Department of Community Development: MARY GRUBB

CLERK'S CERTIFICATE
I HEREBY CERTIFY THAT THE ATTACHED PLAT OF PELICAN LANDING UNIT SEVENTEEN ADDITION, A REPLAT OF TRACT "D" OF PELICAN LANDING UNIT SEVENTEEN AS RECORDED IN PLAT BOOK 53, PAGES 50 THROUGH 53, A SUBDIVISION LOCATED IN SECTION 21, TOWNSHIP 47 SOUTH, RANGE 25 EAST, LEE COUNTY, FLORIDA, HAS BEEN EXAMINED BY ME AND FROM MY EXAMINATION I FIND THAT SAID PLAT COMPLES WITH THE REQUIREMENTS OF CHAPTER 177, LAWS OF FLORIDA. I FURTHER CERTIFY THAT THIS PLAT WAS FILED FOR RECORD AT 2:55 P.M. THIS 22nd DAY OF DECEMBER, 1995 A.D. AND WAS RECORDED IN PLAT BOOK 57, PAGE 29, OF THE PUBLIC RECORDS OF LEE COUNTY, FLORIDA.
Charlie Green
CLERK OF THE COUNTY OF LEE FOR LEE COUNTY, FLORIDA
MAKE CHARLIE GRUBB

SURVEYOR'S CERTIFICATE
I HEREBY CERTIFY THAT THE ATTACHED PLAT OF PELICAN LANDING UNIT SEVENTEEN ADDITION (A REPLAT OF TRACT "D" OF PELICAN LANDING UNIT SEVENTEEN ACCORDING TO THE PLAT THEREOF AS RECORDED IN PLAT BOOK 53, PAGES 50 THROUGH 53, PUBLIC RECORDS OF LEE COUNTY, FLORIDA), IS A TRUE AND CORRECT REPRESENTATION OF THE HEREIN DESCRIBED LAND ACCORDING TO A PRESENT SURVEY MADE AND PLATTED UNDER MY DIRECTION AND SUPERVISION AND THAT THE CURVE DATA COMPLY WITH ALL OF THE REQUIREMENTS OF CHAPTER 177, FLORIDA STATUTES. I FURTHER CERTIFY THAT THE PERMANENT REFERENCE MONUMENTS (PINS) HAVE BEEN PLACED AT THE LOCATIONS SHOWN ON THE PLAT.
PREPARED BY: WILSON, MILLER, BARTON & PECK, INC.
FLORIDA CERTIFICATE OF AUTHORIZATION NO. 12143
Robert E. Gause
REGISTERED PROFESSIONAL LAND SURVEYOR
FLORIDA CERTIFICATE NO. 6174
2-7-1995

Development Order No. 9304010.000