

PELICAN LANDING UNIT EIGHTEEN

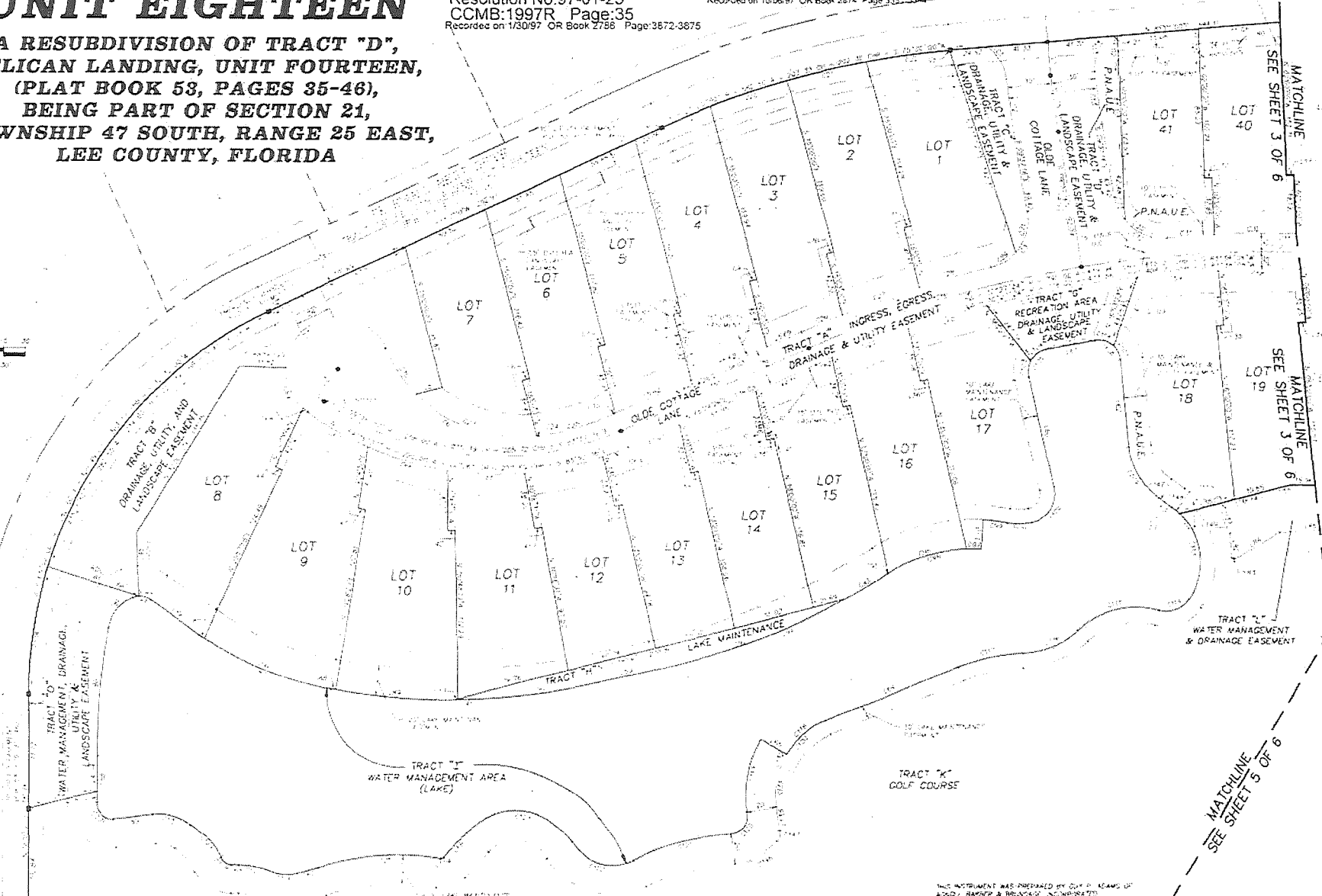
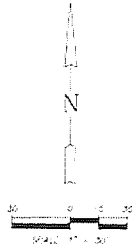
A RESUBDIVISION OF TRACT "D",
PELICAN LANDING, UNIT FOURTEEN,
(PLAT BOOK 53, PAGES 35-46),
BEING PART OF SECTION 21,
TOWNSHIP 47 SOUTH, RANGE 25 EAST,
LEE COUNTY, FLORIDA

Petition to Vacate
Petition No:96-11-166.04R
Description: A portion of Tract B
See CCMB
Date of Approval:01/15/97
Resolution No:97-01-23
CCMB:1997R Page:35
Recorded on 1/30/97 OR Book 2786 Page:3872-3875

Petition to Vacate
Petition No:97-08-050.02R
Description: All Show easements indicated as 7.5R
See CCMB
Date of Approval:06/23/97
Resolution No:97-08-50
CCMB:1997R Page:529
Recorded on 10/06/97 OR Book 2874 Page:3352-3364

PLAT BOOK 56, PAGE 22

SHEET 2 OF 5



MATCHLINE
SEE SHEET 4 OF 6

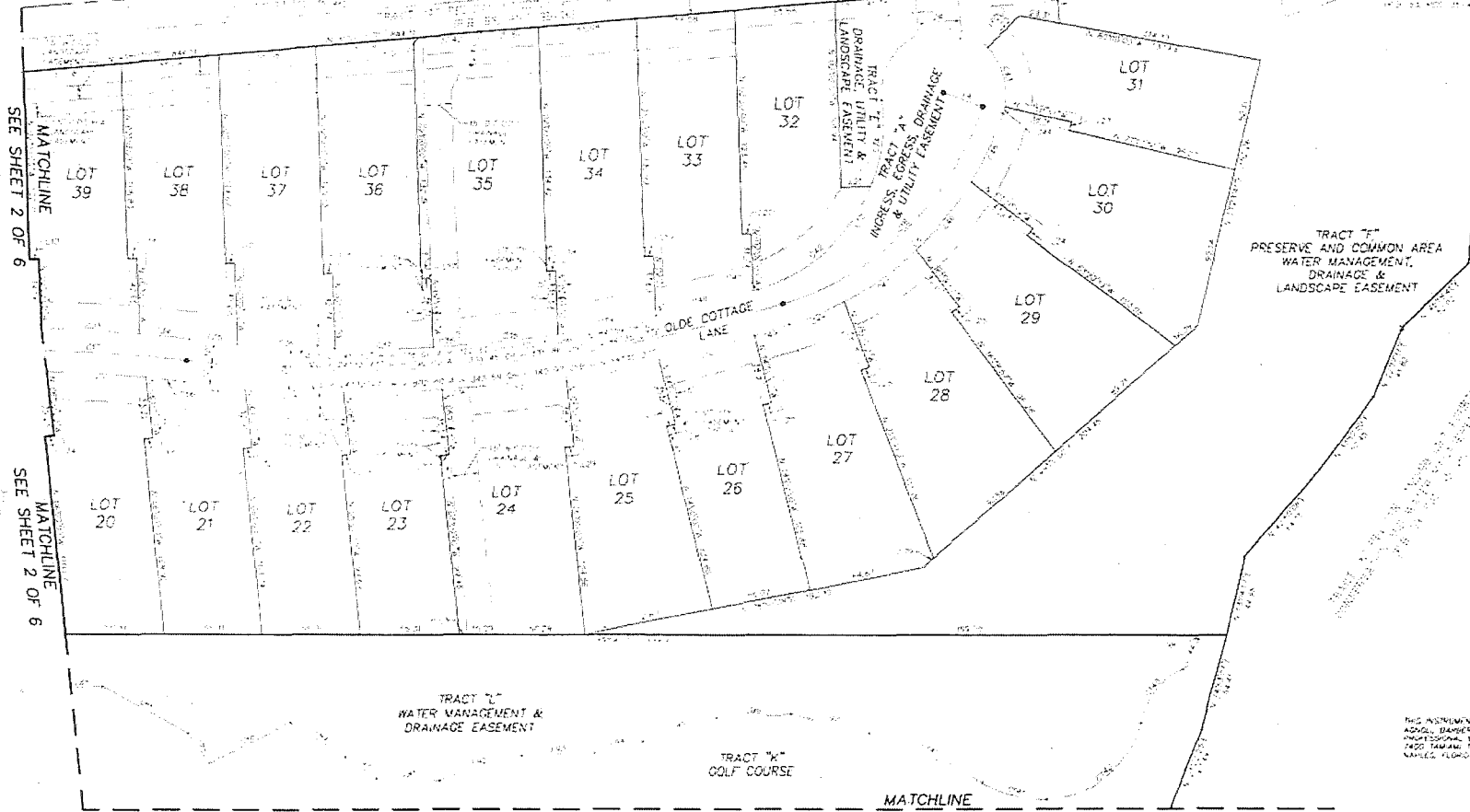
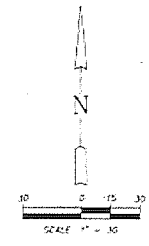
MATCHLINE
SEE SHEET 3 OF 6

THIS INSTRUMENT WAS PREPARED BY GUY P. ADAMS, OF
ADAMS, BARNER & BRIDGEMAN, INCORPORATED,
PROFESSIONAL ENGINEERS, PLANNERS AND LAND SURVEYORS,
2400 CAMDEN TRAIL, SUITE 100,
DADE CITY, FLORIDA 33523

ACAD 46-4560-071
JANUARY 5, 1995

PELICAN LANDING UNIT EIGHTEEN

A RESUBDIVISION OF TRACT "D",
PELICAN LANDING, UNIT FOURTEEN,
(PLAT BOOK 53, PAGES 35-46),
BEING PART OF SECTION 21,
TOWNSHIP 47 SOUTH, RANGE 25 EAST,
LEE COUNTY, FLORIDA



SEE SHEET 2 OF 6
MATCHLINE

SEE SHEET 2 OF 6
MATCHLINE

MATCHLINE
SEE SHEET 5 OF 6

THIS INSTRUMENT WAS PREPARED BY DYM R. ADAMT OF
ADAMS, BARNER & UNKLEIGH, INCORPORATED
REGISTERED ENGINEERS, PLANNERS AND LAND SURVEYORS
1900 TAMIAMI TRAIL SOUTH
PALM BEACH, FLORIDA 33411

MATCHLINE
SEE SHEET 2 OF 6

TRACT "M"
CONSERVATION &
DRAINAGE EASEMENT

PELICAN LANDING UNIT EIGHTEEN

A RESUBDIVISION OF TRACT "D",
PELICAN LANDING, UNIT FOURTEEN,
(PLAT BOOK 53, PAGES 35-46),
BEING PART OF SECTION 21,
TOWNSHIP 47 SOUTH, RANGE 25 EAST,
LEE COUNTY, FLORIDA



TRACT "X"
GOLF COURSE

TRACT "J"
WATER MANAGEMENT AREA
(LAKE)

MATCHLINE
SEE SHEET 5 OF 6

PELICAN LANDING UNIT EIGHTEEN
PLAT BOOK 56 PAGE 24

PELICAN LANDING UNIT EIGHTEEN
TRACT 18
PREPARED BY GUY P. ADAMS
REGISTERED PROFESSIONAL ENGINEER
STATE OF FLORIDA
NO. 12345
TALLAHASSEE, FLORIDA

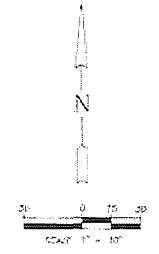
THIS INSTRUMENT WAS PREPARED BY GUY P. ADAMS BY
ADAMS, BARNER & BROSIGAN, INCORPORATED
PROFESSIONAL ENGINEERS, PLANNERS AND ARCHITECTS
1900 TOWN SQUARE, SUITE 200
TALLAHASSEE, FLORIDA 32301

ACAD NO. 4884-071
JANUARY 2, 1992

MATCHLINE
SEE SHEET 3 OF 6

PELICAN LANDING UNIT EIGHTEEN

A RESUBDIVISION OF TRACT "D",
PELICAN LANDING, UNIT FOURTEEN,
(PLAT BOOK 53, PAGES 35-46),
BEING PART OF SECTION 21,
TOWNSHIP 47 SOUTH, RANGE 25 EAST,
LEE COUNTY, FLORIDA



MATCHLINE
SEE SHEET 2 OF 6

MATCHLINE
SEE SHEET 4 OF 6

TRACT "K"
GOLF COURSE

TRACT "N"
CONSERVATION & DRAINAGE EASEMENT

TRACT "J"
WATER MANAGEMENT AREA
(LAKE)

PELICAN LANDING, UNIT EIGHTEEN
TRACT "D"
RE PLAT BOOK 53

PELICAN LANDING, UNIT FOURTEEN
TRACT "D"
RE PLAT BOOK 53

TRACT "D"
PELICAN LANDING, UNIT FOURTEEN
RE PLAT BOOK 53

THIS INSTRUMENT WAS PREPARED BY GUY R. ADAM, JR.
AGENCY: HANSEN & HANSEN, INCORPORATED
PROFESSIONAL ENGINEER, PLANNING AND LAND SURVEYING
TALLAHASSEE, FLORIDA
MAPLE, FLORIDA 32363

ACAD. NO. 4799-174
JANUARY 2, 1992

PELICAN LANDING UNIT EIGHTEEN

A RESUBDIVISION OF TRACT "D",
PELICAN LANDING, UNIT FOURTEEN,
(PLAT BOOK 53, PAGES 35-46),
BEING PART OF SECTION 21,
TOWNSHIP 47 SOUTH, RANGE 25 EAST,
LEE COUNTY, FLORIDA

LOT	AREA (SQ. FT.)	USE	OWNER	TRACT AREA (AC)	USE
1	8,304	RESIDENTIAL	...	A	11101 PRIVATE ROAD RIGHT-OF-WAY (INDIVIDUAL) SCHOOL, UTILITY AND LANDSCAPE FACILITY
2	8,700	RESIDENTIAL	...	B	07107 COMMON AREA UTILITY, DRAINAGE AND LANDSCAPE FACILITY
3	8,670	RESIDENTIAL	...	C	00628 COMMON AREA UTILITY, DRAINAGE AND LANDSCAPE FACILITY
4	8,261	RESIDENTIAL	...	D	00119 COMMON AREA UTILITY, DRAINAGE AND LANDSCAPE FACILITY
5	8,000	RESIDENTIAL	...	E	01111 COMMON AREA UTILITY, DRAINAGE AND LANDSCAPE FACILITY
6	8,707	RESIDENTIAL	...	F	11304 COMMON AREA URBAN PAVEMENT, WATER MANAGEMENT, DRAINAGE & LANDSCAPE FACILITY
7	8,309	RESIDENTIAL	...	G	00742 COMMON AREA RECREATION, UTILITY DRAINAGE AND LANDSCAPE FACILITY
8	10,155	RESIDENTIAL	...	H	00630 LAKE MAINTENANCE FACILITY
9	10,155	RESIDENTIAL	...	I	11012 LAKE/WATER MANAGEMENT FACILITY
10	10,155	RESIDENTIAL	...	J	07107 LAKE/WATER MANAGEMENT FACILITY
11	8,711	RESIDENTIAL	...	K	11326 GOLF COURSE
12	11,726	RESIDENTIAL	...	L	01043 WATER MANAGEMENT & DRAINAGE FACILITY
13	10,660	RESIDENTIAL	...	M	02005 OBSERVATION AND MANAGEMENT FACILITY
14	8,009	RESIDENTIAL	...	N	02001 OBSERVATION AND MANAGEMENT FACILITY
15	8,405	RESIDENTIAL	...	O	01007 WATER MANAGEMENT, DRAINAGE UTILITY AND LANDSCAPE FACILITY
16	8,223	RESIDENTIAL	...		
17	8,590	RESIDENTIAL	...		
18	10,116	RESIDENTIAL	...		
19	8,700	RESIDENTIAL	...		
20	7,962	RESIDENTIAL	...		
21	7,746	RESIDENTIAL	...		
22	7,440	RESIDENTIAL	...		
23	8,259	RESIDENTIAL	...		
24	8,055	RESIDENTIAL	...		
25	7,967	RESIDENTIAL	...		
26	7,967	RESIDENTIAL	...		
27	8,281	RESIDENTIAL	...		
28	7,746	RESIDENTIAL	...		
29	7,967	RESIDENTIAL	...		
30	8,267	RESIDENTIAL	...		
31	10,156	RESIDENTIAL	...		
32	8,021	RESIDENTIAL	...		
33	8,069	RESIDENTIAL	...		
34	11,845	RESIDENTIAL	...		
35	8,267	RESIDENTIAL	...		
36	8,405	RESIDENTIAL	...		
37	7,967	RESIDENTIAL	...		
38	8,405	RESIDENTIAL	...		
39	7,967	RESIDENTIAL	...		
40	7,967	RESIDENTIAL	...		
41	7,967	RESIDENTIAL	...		

LOT AREA TABLE

LOT	AREA (SQ. FT.)
1	8,304
2	8,700
3	8,670
4	8,261
5	8,000
6	8,707
7	8,309
8	10,155
9	10,155
10	10,155
11	8,711
12	11,726
13	10,660
14	8,009
15	8,405
16	8,223
17	8,590
18	10,116
19	8,700
20	7,962
21	7,746
22	7,440
23	8,259
24	8,055
25	7,967
26	7,967
27	8,281
28	7,746
29	7,967
30	8,267
31	10,156
32	8,021
33	8,069
34	11,845
35	8,267
36	8,405
37	7,967
38	8,405
39	7,967
40	7,967
41	7,967

TOTAL LOT AREA = 365,616 (SQ. FT.) (8,393.3 AC)

TRACT USE AREA TABLE

TRACT	AREA (AC)	USE
A	11101	PRIVATE ROAD RIGHT-OF-WAY (INDIVIDUAL) SCHOOL, UTILITY AND LANDSCAPE FACILITY
B	07107	COMMON AREA UTILITY, DRAINAGE AND LANDSCAPE FACILITY
C	00628	COMMON AREA UTILITY, DRAINAGE AND LANDSCAPE FACILITY
D	00119	COMMON AREA UTILITY, DRAINAGE AND LANDSCAPE FACILITY
E	01111	COMMON AREA UTILITY, DRAINAGE AND LANDSCAPE FACILITY
F	11304	COMMON AREA URBAN PAVEMENT, WATER MANAGEMENT, DRAINAGE & LANDSCAPE FACILITY
G	00742	COMMON AREA RECREATION, UTILITY DRAINAGE AND LANDSCAPE FACILITY
H	00630	LAKE MAINTENANCE FACILITY
I	11012	LAKE/WATER MANAGEMENT FACILITY
J	07107	LAKE/WATER MANAGEMENT FACILITY
K	11326	GOLF COURSE
L	01043	WATER MANAGEMENT & DRAINAGE FACILITY
M	02005	OBSERVATION AND MANAGEMENT FACILITY
N	02001	OBSERVATION AND MANAGEMENT FACILITY
O	01007	WATER MANAGEMENT, DRAINAGE UTILITY AND LANDSCAPE FACILITY

TOTAL TRACT AREA = 808,104 SQ. FT. (20,851.9 AC)

GRAND TOTAL = 28,245.1 AC