

REPLAT OF TRACT E PELICAN LANDING UNIT THREE

PLAT BOOK 46, PAGES 61 THRU 65, LEE COUNTY RECORDS
SECTION 16, TOWNSHIP 47 SOUTH, RANGE 25 EAST
LEE COUNTY, FLORIDA

APPROVALS

THIS PLAT ACCEPTED THIS 14th DAY OF NOVEMBER, 1990 IN OPEN MEETING OF THE BOARD OF COUNTY COMMISSIONERS OF LEE COUNTY FLORIDA

Donald D. [Signature]
BOARD CHAIRMAN

Jon [Signature]
COUNTY ATTORNEY

Paul H. Bond
DIRECTOR OF DIVISION OF
DEVELOPMENT REVIEW

Charlie Green
CLERK OF COURT

William P. [Signature]
DIRECTOR, DEPT. OF COMM. DEV.

2942952

I HEREBY CERTIFY THAT THE ATTACHED REPLAT OF TRACT "E", PELICAN LANDING UNIT THREE HAS BEEN EXAMINED BY ME AND FROM MY EXAMINATION I FIND THAT SAID PLAT COMPLIES IN FORM WITH THE REQUIREMENTS OF CHAPTER 177, FLORIDA STATUTES. I FURTHER CERTIFY THAT SAID PLAT WAS FILED FOR RECORD AT 11:41 AM THIS 27th DAY OF NOVEMBER, 1990, AND WAS DULY RECORDED IN PLAT BOOK 47 AT PAGES 25-26 OF THE PUBLIC RECORDS OF LEE COUNTY, FLORIDA.

Charlie Green
CLERK OF THE CIRCUIT COURT
IN AND FOR LEE COUNTY

NOTICE:
LANDS DESCRIBED IN THIS PLAT ARE SUBDIVIDED BY THE DEVELOPER WITHOUT THE ROADS, DRAINAGE AND SEWER FACILITIES BEING SPECIFICALLY APPROVED OR ACCEPTED BY LEE COUNTY. ANY PURCHASER OF A LOT IN THIS SUBDIVISION IS ADVISED THAT HE MAY BE SUBJECT TO ASSESSMENT OR CALLED UPON TO BEAR A PORTION OF OR ALL OF THE EXPENSE OF CONSTRUCTION, MAINTENANCE OR IMPROVEMENT OF ROADS, DRAINAGE AND SEWAGE FACILITIES WITHIN THE SUBDIVISION.

CERTIFICATE

I HEREBY CERTIFY THAT THE ATTACHED REPLAT OF TRACT "E", PELICAN LANDING UNIT THREE IS A TRUE AND CORRECT REPRESENTATION OF THE HEREIN DESCRIBED LAND ACCORDING TO A RECENT SURVEY MADE PLATTED UNDER MY DIRECTION AND SUPERVISION AND THAT THE SURVEY DATA COMPLIES WITH ALL OF THE REQUIREMENTS OF CHAPTER 177, FLORIDA STATUTES.

I FURTHER CERTIFY THAT THE PERMANENT REFERENCE MONUMENTS (P.R.M.'S) HAVE BEEN PLACED AT THE LOCATIONS SHOWN ON THIS PLAT.

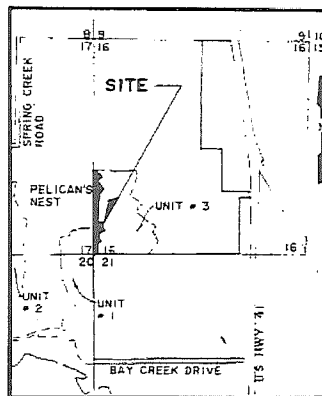
DONE THIS 10th DAY OF October, 1990.

W. Britt Pomeroy Jr.
V. BRITT POMEROY JR.
PROFESSIONAL LAND SURVEYOR
FLORIDA CERTIFICATE NO. 4448

COUNTY DEVELOPMENT
ORDER NO. 4-24-90

OCTOBER, 1990

JOHNSON ENGINEERING, INC.
CIVIL ENGINEERS - LAND SURVEYORS
FORT MYERS, FLORIDA



VICINITY MAP
SCALE: 1" = 2000'

EASEMENT DEDICATION

EASEMENTS ARE HEREBY RESERVED IN PERPETUITY FOR UNDERGROUND PUBLIC UTILITIES AND ARE 6 FEET WIDE ALONG THE SIDES AND REAR, AND 10 FEET WIDE ALONG THE FRONT OF EACH LOT, UNLESS OTHERWISE SHOWN. ALL ROADS ARE PUBLIC UTILITY ACCESS EASEMENTS.

DEDICATION

KNOW ALL MEN BY THESE PRESENTS THAT WESTINGHOUSE BAYSIDE COMMUNITIES, INC., A CORPORATION UNDER THE LAWS OF THE STATE OF FLORIDA, THE OWNER OF THE HEREIN DESCRIBED LANDS HAS CAUSED THIS REPLAT OF TRACT "E" OF PELICAN LANDING UNIT THREE AS SHOWN IN PLAT BOOK 46, PAGES 61 THRU 65 OF LEE COUNTY RECORDS, FLORIDA TO BE MADE AND DOES HEREBY DEDICATE TO THE PERPETUAL USE OF THE PUBLIC ALL UTILITY EASEMENTS, AND DO HEREBY DEDICATE TO PELICAN LANDING COMMUNITY ASSOCIATION, INC., ALL DRIVES, DRAINAGE EASEMENTS, IRRIGATION EASEMENTS, AND WATER MANAGEMENT, CONSERVATION AND COMMON AREAS, AND TRACT F.G.H.I. AND J. BEING DEDICATED SOLELY FOR THE USES AND PURPOSES INDICATED, HEREBY REVOKING, VACATING AND ABROGATING ANY PLAT OR PLATS OF ANY PART OF SAID LANDS HERETOFORE MADE.

IN WITNESS WHEREOF, WESTINGHOUSE BAYSIDE COMMUNITIES, INC. HAS CAUSED THESE PRESENTS TO BE MADE AND SIGNED IN ITS NAME BY ITS PRESIDENT, ITS CORPORATE SEAL AFFIXED, AND ATTESTED TO BY ITS ASSISTANT SECRETARY THIS 10th DAY OF October, 1990, A.D.

WESTINGHOUSE BAYSIDE COMMUNITIES, INC.

[Signature]
WITNESS AS TO ALL

[Signature]
BYRON R. KOSTE, PRESIDENT

[Signature]
WITNESS AS TO ALL

[Signature]
LOUIS H. HOEGSTED, ASST. SECRETARY

ACKNOWLEDGMENT

STATE OF FLORIDA
COUNTY OF LEE

I HEREBY CERTIFY THAT ON THIS DAY BEFORE ME PERSONALLY APPEARED BYRON R. KOSTE, PRESIDENT AND LOUIS H. HOEGSTED, ASSISTANT SECRETARY OF WESTINGHOUSE BAYSIDE COMMUNITIES, INC., A CORPORATION UNDER THE LAWS OF THE STATE OF FLORIDA, TO ME KNOWN TO BE THE PERSONS DESCRIBED IN AND WHO EXECUTED THE FOREGOING DEDICATION AND THEY ACKNOWLEDGE THE EXECUTION THEREOF TO BE THEIR FREE ACT AND DEED AS SUCH OFFICERS FOR THE USES AND PURPOSES THEREIN MENTIONED AND THAT THEY AFFIXED THERETO THE OFFICIAL SEAL OF SAID CORPORATION AND THAT SAID DEDICATION IS THE ACT AND DEED OF SAID CORPORATION.

WITNESS MY HAND AND OFFICIAL SEAL AT FT. MYERS, SAID COUNTY AND STATE THIS 10th DAY OF October, 1990 A.D.

[Signature]
NOTARY PUBLIC STATE OF FLORIDA AT LARGE
MY COMMISSION EXPIRES: May 6, 1991
Jeanette L. Thomas

NOTICE

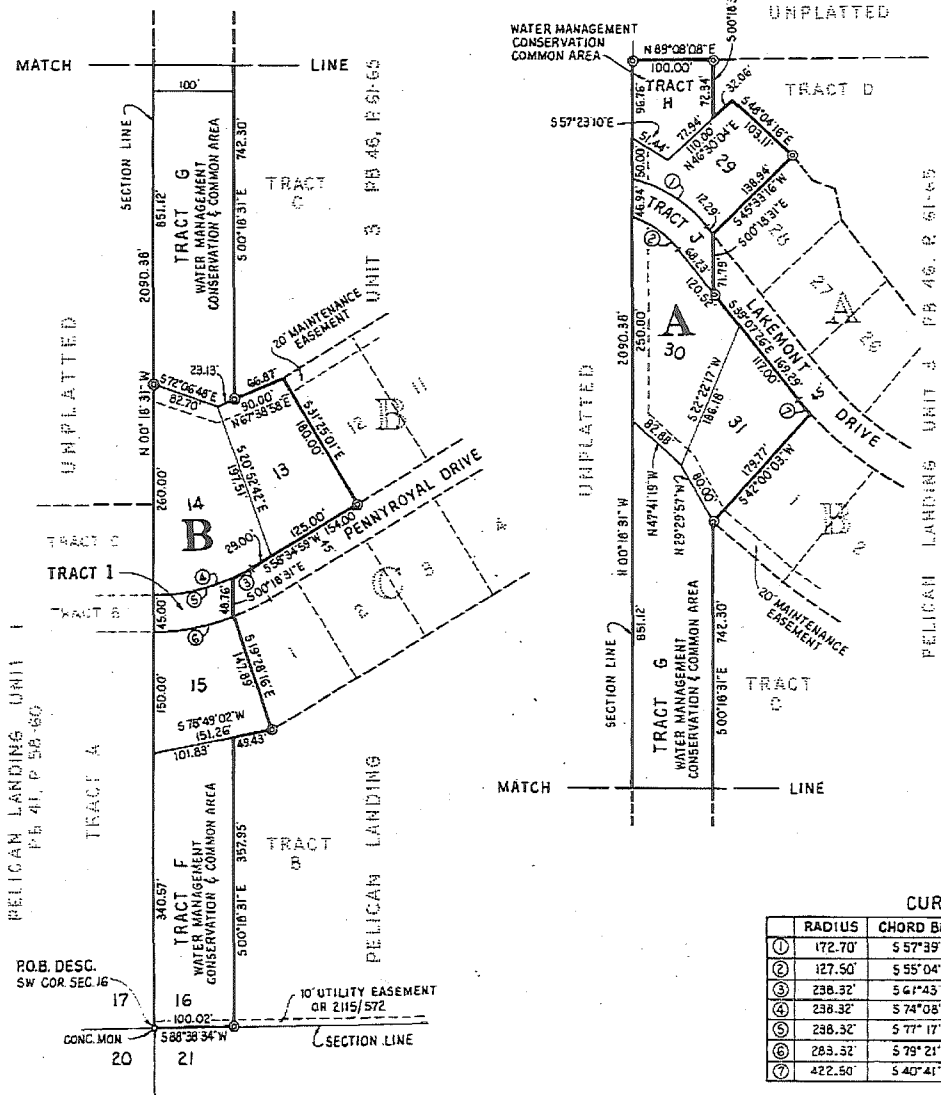
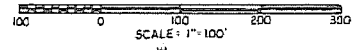
THERE MAY BE ADDITIONAL RESTRICTIONS THAT ARE NOT RECORDED ON THIS PLAT THAT MAY BE FOUND IN THE PUBLIC RECORDS OF THIS COUNTY.

NOTES

1. PERMANENT REFERENCE MONUMENTS (P.R.M.'S) ARE TAPERED CONCRETE MONUMENTS WITH METAL DISKS SET IN THE TOP BEARING THE SURVEYOR'S CERTIFICATE NUMBER.
2. PERMANENT CONTROL POINTS (P.C.P.'S) ARE METAL MARKERS BEARING THE SURVEYOR'S CERTIFICATE NUMBER. BEARINGS SHOWN ARE BASED ON THE PLAT OF "PELICAN'S NEST UNIT ONE", AS RECORDED IN PLAT BOOK 41, PAGES 58 THRU 60, PUBLIC RECORDS OF LEE COUNTY, FLORIDA.

REPLAT OF TRACT E PELICAN LANDING UNIT THREE

PLAT BOOK 46, PAGES 61 THRU 65, LEE COUNTY RECORDS
SECTION 16, TOWNSHIP 47 SOUTH, RANGE 25 EAST
LEE COUNTY, FLORIDA



DESCRIPTION
PARCEL IN
SECTION 16, T. 47 S., R. 25 E.
LEE COUNTY, FLORIDA

A TRACT OR PARCEL OF LAND LYING IN SECTION 16, TOWNSHIP 47 SOUTH, RANGE 25 EAST, LEE COUNTY, FLORIDA WHICH TRACT OR PARCEL IS DESCRIBED AS FOLLOWS:
BEGINNING AT THE SOUTHWEST CORNER OF SAID SECTION 16 RUN N00°18'31"W ALONG THE WEST LINE OF SAID SECTION FOR 2090.36 FEET;
THENCE RUN N89°08'08"E FOR 100.00 FEET;
THENCE RUN S00°18'31"E FOR 72.34 FEET;
THENCE RUN N46°30'04"E FOR 32.06 FEET;
THENCE RUN S48°04'16"E FOR 103.11 FEET;
THENCE RUN S45°33'16"W FOR 138.94 FEET;
THENCE RUN S00°18'31"E FOR 71.79 FEET;
THENCE RUN S39°07'26"E FOR 169.29 FEET TO A POINT OF CURVATURE, THENCE RUN SOUTHEASTERLY ALONG THE ARC OF A CURVE TO THE LEFT OF RADIUS 422.50 FEET (DELTA 03°07'10") (CHORD BEARING S40°41'00"E) (CHORD 23.00 FEET) FOR 23.00 FEET; THENCE RUN S42°00'03"W FOR 179.77 FEET; THENCE RUN S00°18'31"E FOR 742.30 FEET; THENCE RUN N67°38'58"E FOR 66.67 FEET; THENCE RUN S31°25'01"E FOR 180.00 FEET; THENCE RUN S58°34'59"W FOR 154.00 FEET TO A POINT OF CURVATURE; THENCE RUN SOUTHWESTERLY ALONG THE ARC OF A CURVE TO THE RIGHT OF RADIUS 238.32 FEET (DELTA 06°17'55") (CHORD BEARING S61°43'57"W) (CHORD 26.19 FEET) FOR 26.20 FEET; THENCE RUN S00°18'31"E FOR 48.76 FEET; THENCE RUN S19°28'16"E FOR 147.89 FEET; THENCE RUN S78°49'02"W FOR 49.43 FEET; THENCE RUN S00°18'31"E FOR 357.95 FEET TO AN INTERSECTION WITH THE SOUTHERLY SECTION LINE OF SAID SECTION 16; THENCE RUN S68°38'34"W ALONG SAID SECTION LINE FOR 100.02 FEET TO THE POINT OF BEGINNING,
CONTAINING 5.97 ACRES MORE OR LESS.

CURVE DATA

	RADIUS	CHORD BEARING	CHORD	LENGTH	DELTA
①	172.70'	S 57°39'02"E	109.63'	111.56'	37°03'24"
②	127.50'	S 55°04'21"E	70.07'	70.99'	31°54'02"
③	238.32'	S 4°43'57"W	26.19'	26.20'	6°17'55"
④	238.32'	S 74°08'14"W	127.81'	129.40'	31°06'31"
⑤	238.32'	S 77°17'14"W	102.39'	105.19'	24°48'32"
⑥	283.32'	S 79°21'28"W	101.65'	102.20'	20°40'04"
⑦	422.50'	S 40°41'00"E	23.00'	23.00'	3°07'10"

COUNTY DEVELOPMENT
ORDER NO. 4-24-90